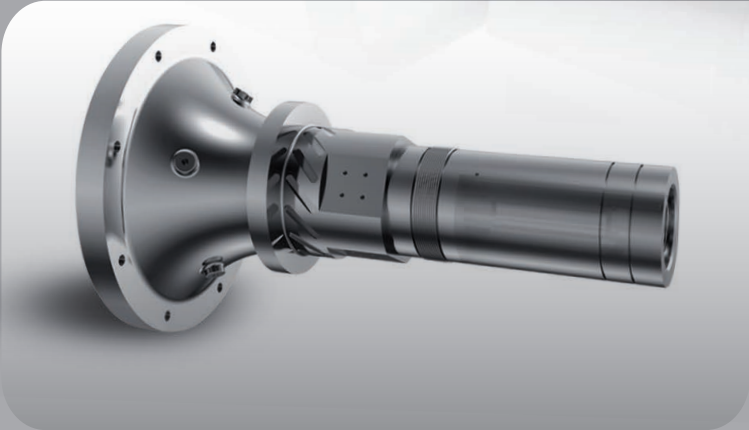




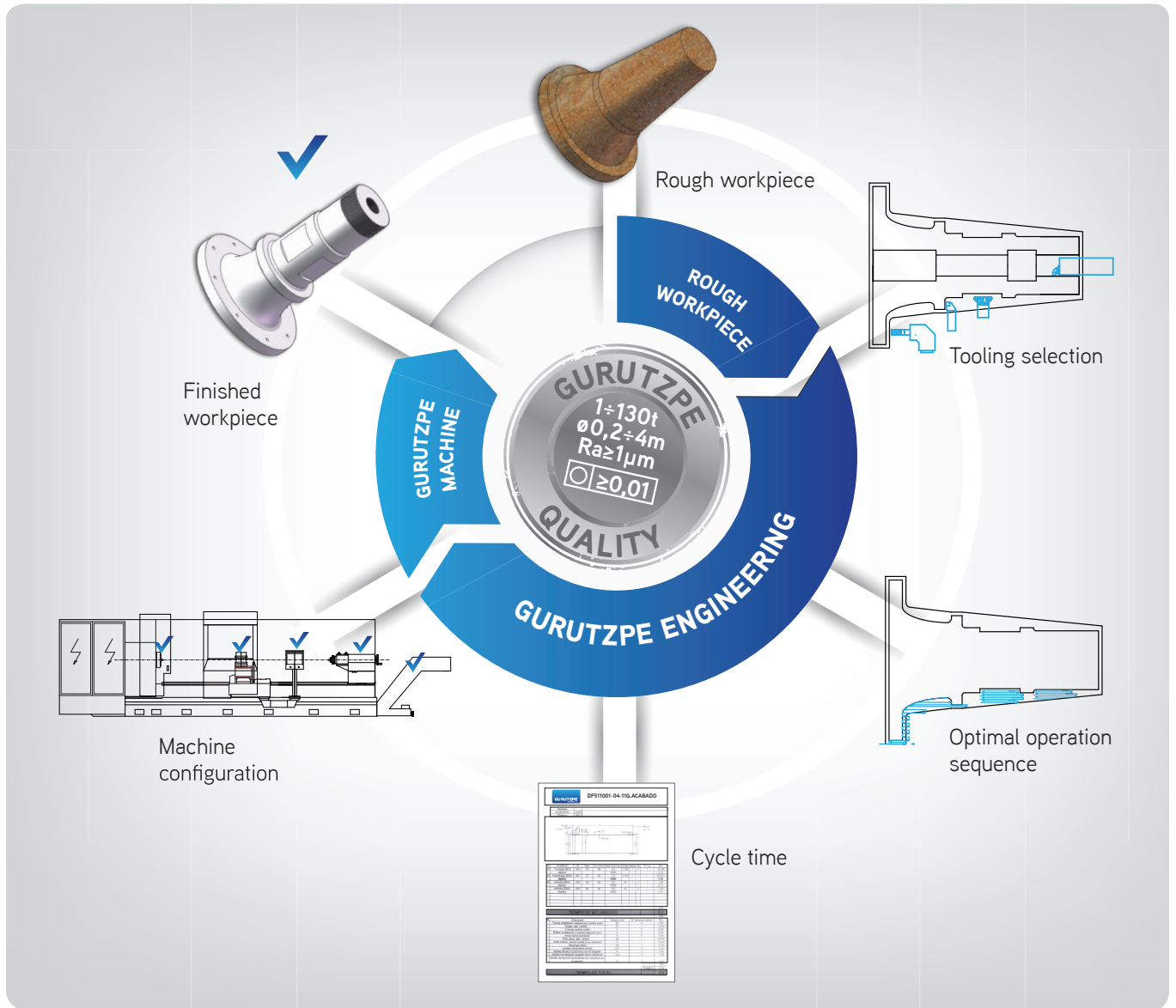
smart turning solutions

EUROPEAN LEADERS OF HEAVY DUTY CNC LATHES



# TURNING SOLUTIONS

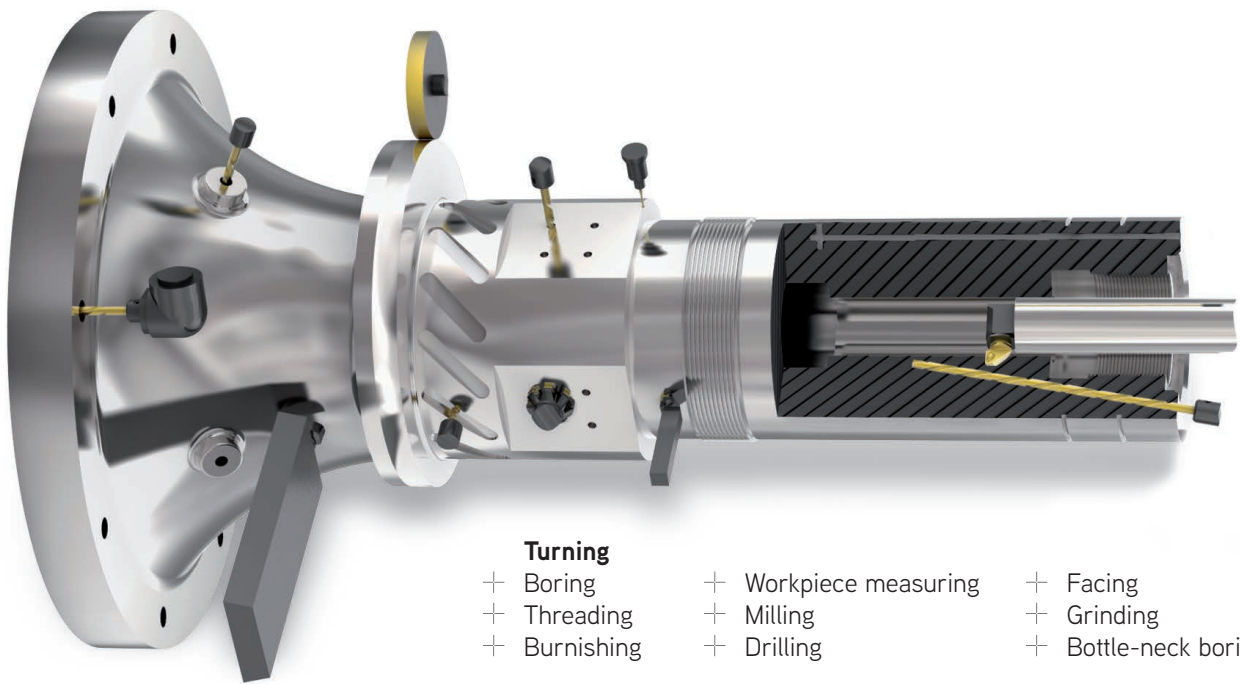
Focused on the **quality** and **cost** for your workpiece.



## CHOICE OF MACHINE MODEL

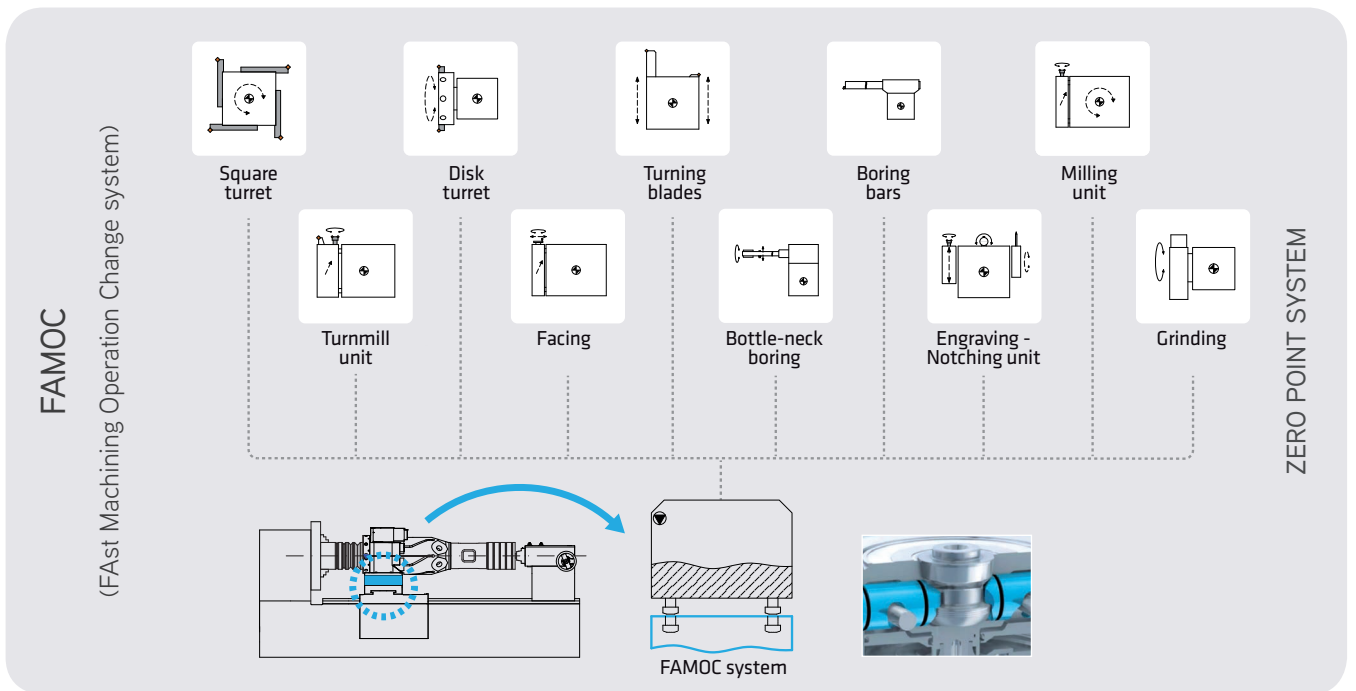
$W_{bc}$ (t)	$S_{ob}$ (mm)	1000	1300	1600	2000	2500	3000	4000
	$S_{oc}$ (mm)	700	1000	1300	1700	2100	2500	4000
5 t		GL10						
12 t			GL13 GLX13					
18 t				GL16 GLX16				
25 t					GL20 GLX20			
40 t						GLH25		
60 t							GLH30	
90 t								GLD40
130 t								

# COMPLETE WORKPIECE MACHINING

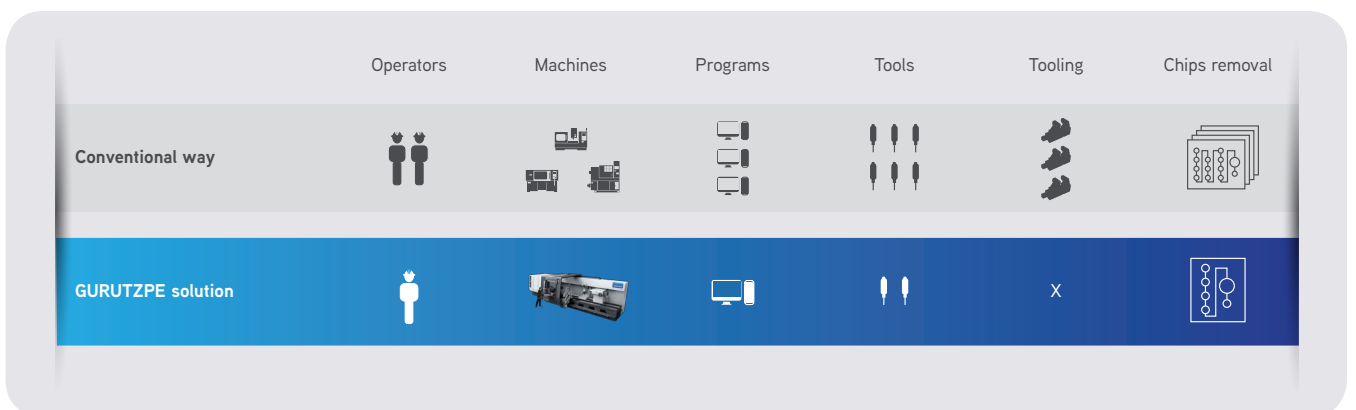


## Turning

- + Boring
- + Threading
- + Burnishing
- + Workpiece measuring
- + Milling
- + Drilling
- + Facing
- + Grinding
- + Bottle-neck boring



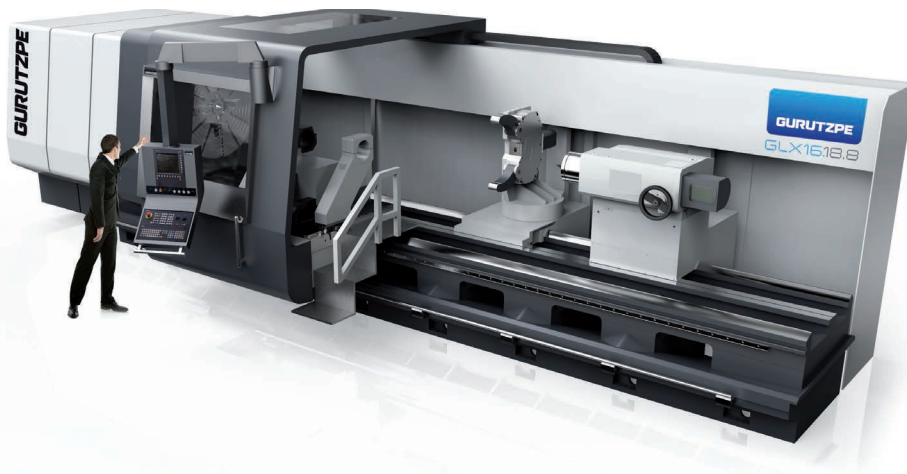
## BENEFITS OF GURUTZPE MULTITASKING SOLUTION



# MACHINE MODELS

## SERIES GL

Monoblock casting bed, with double V type hardened and grounded box guideways, plus a 3rd guide way. Maximum rigidity, accuracy and durability.



## SERIES GLX

Monoblock casting bed, with 5 or 6 hardened and grounded box guideways with double V type guideway configuration. This series combines a maximum flexibility (carriages crossing capability) with the maximum rigidity, accuracy and durability.

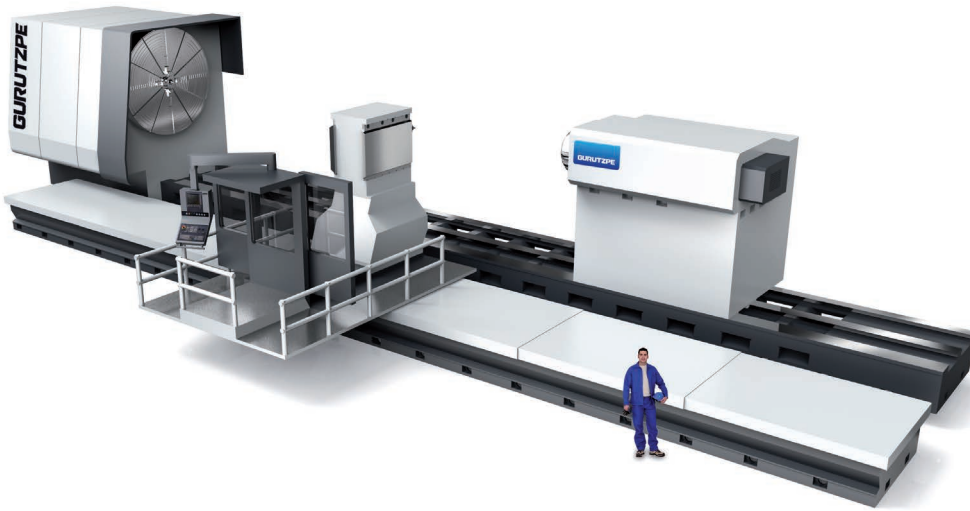
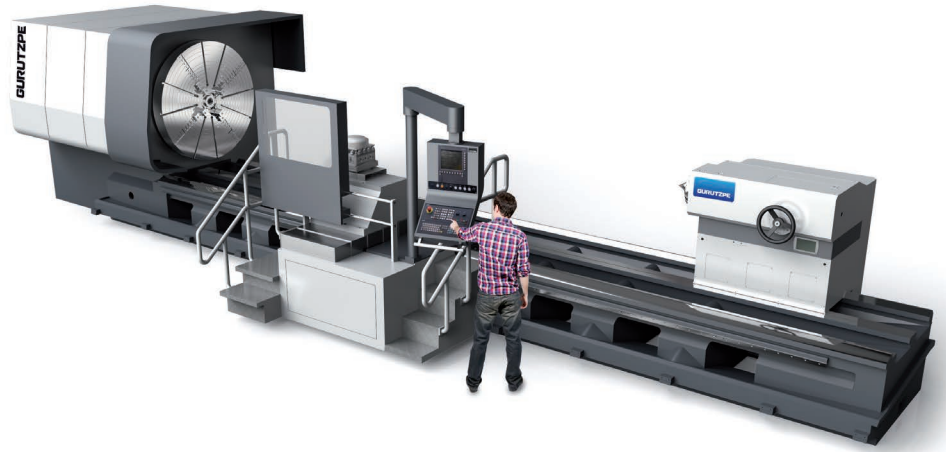
NOT CROSSING

				GL 10	GL13	GL16	GL20
WORKING RANGE	Swing over the bed	S <sub>ob</sub>	mm	Ø 1000	Ø 1300	Ø 1600	Ø 2000
	<b>Swing over the carriage</b>	<b>S<sub>oc</sub></b>	<b>mm</b>	<b>Ø 700</b>	<b>Ø 1000</b>	<b>Ø 1300</b>	<b>Ø 1600</b>
	Distance between centers	L <sub>bc</sub>	m	≤3	≤8	≤15	≤15
HEADSTOCK	Motor power S1/S6	P <sub>m</sub>	kw	22/28 [28/34]	28/34 [39/48]	39/48 [51/65]	71/88 [92/114]
	Motor torque S1/S6	T <sub>m</sub>	kNm	2,7/3,3 [3,4/4,2]	5,3/6,5 [7,4/9,2]	11,2/13,7 [13,8/17,6]	124,4/30,2 [31,2/38,7]
	Speed range	n <sub>s</sub>	rpm	0÷1400*	0÷1000*	0÷800*	0÷500
	Chuck adapt. DIN 55026			A11	A11	A15	A20
	Spindle bore Ø	Ø <sub>sb</sub>	mm	Ø130	Ø110 [Ø360]	Ø110 [Ø550]	Ø110
	Main axis bearing Ø	Ø <sub>fb</sub>	mm	Ø180	Ø203	Ø203	Ø254
TAILSTOCK	<b>Workpiece weight bc</b>	<b>W<sub>bc</sub></b>	<b>t</b>	<b>5</b>	<b>6/10/12</b>	<b>6/10/15/18</b>	<b>15/20/25</b>
	Quill	Ø <sub>q</sub>	mm	140	140/180/220	140/180/220/280	220/280/320
CARRIAGE SLIDE	Travel "X" / "Z"		mm	500 / L <sub>bc</sub> + 50	675 / L <sub>bc</sub> + 50	850 / L <sub>bc</sub> + 100	950 / L <sub>bc</sub> + 100
	Feed force "X" / "Z"	F	kN	12 / 18	12 / 24	22,5 / 34,5	28 / 50
	Feed speed "X" / "Z"	v	m/min	8 / 6	8 / 6	8 / 6	8 / 6
OTHER DATA	Lenght x Width x Height		m	8,9 (4m) x 2,5 x 2	9,6 (4m) x 2,8 x 2,6	12 (6m) x 3 x 2,8	14,6 (6m) x 3,2 x 3
	Center height above the ground		mm	1.265	1.525	1.750	1.950
	Aprox weight of the machine	W <sub>m</sub>	t	10 (4m)	15 (4m)	25 (6m)	34 (8m)
	Bed width	B <sub>w</sub>	mm	680	890	1.110	1.265
	CNC			FAGOR / SIEMENS / FANUC			
	Acceptance test / accuracy			DIN 8607 / ISO 13041			

\* Peak speed for 10 minutes. Maximum continuous speed, 60% of peak speed. Consult for other possibilities.

## SERIES GLH

Monoblock casting bed, with 5 or 6 hardened and grouted box guideways with double V type guideway configuration. For up to 90t weight workpieces, this series combines a maximum flexibility (carriages crossing capability) with the maximum rigidity, accuracy and durability.



## SERIES GLO

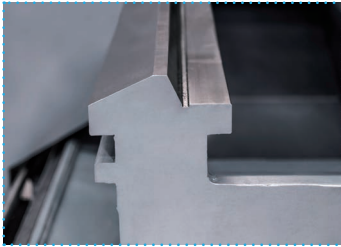
Double parallel bed lathe, one bed for holding the workpiece (headstock, tailstock and steadies) and the other bed for the machining carriages. Monoblock casting beds, with 6 hardened and grouted box guideways with double V type guideway configuration. Double gantry type drive system, with maximum positioning accuracy and a maximum rigidity.

### CROSSING CARRIAGES

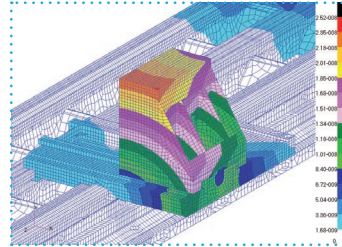
### CROSSING CARRIAGES AND OPEN BACK

### DOUBLE BED

GLX13			GLX16			GLX20			GLH25			GLH30			GLD40		
Ø 1300			Ø 1600			Ø 2000			Ø 2500			Ø 3000			Ø 4000		
Ø 1000			Ø 1300			Ø 1700			Ø 2100			Ø 2500			Ø 4000		
≤15			≤15			≤20			≤20			≤25			≤25		
28/34 [39/48]			39/48 [51/65]			71/88 [92/114]			92/114			92/114 113/140			113/140 142/176		
5,3/6,5 [7,4/9,2]			11,2/13,7 [13,8/17,6]			24,4/30,2 [31,2/38,7]			31,2/38,7			31,2/38,7 65/80			38,3/47,5 65/80 81,4/100		
0÷1000*			0÷800*			0÷500			0÷500			0÷500			0÷300 0÷250		
A11			A15			A20			A20			A28			A28		
Ø110 [Ø360]			Ø110 [Ø550]			Ø110			-			-			-		
Ø203			Ø203			Ø254			Ø290			Ø380			Ø420		
6/10/12			6/10/15/18			15/20/25			30			40			60		
140/180/220			140/180/220/280			220/280/320			360			400			500		
580 / L <sub>bc</sub> + 50			725 / L <sub>bc</sub> + 100			900 / L <sub>bc</sub> + 100			1130 / L <sub>bc</sub> + 100			1375 / L <sub>bc</sub> + 100			1750 / L <sub>bc</sub> + 100		
12 / 24			22,5 / 34,5			28 / 50			30 / 80			40/80			60/110		
8 / 6			8 / 6			8 / 6			8 / 6			8 / 6			8 / 6		
11,4 (6m) x 2,9 x 2,6			11,8 (6m) x 3,3 x 2,9			14,4 (8m) x 3,5 x 3,2			15 (8m) x 5,6 x 3,5			16,5 (8m) x 7 x 4			18 (8m) x 9,5 x 5,5		
1.500			1.690			1.865			2.040			2.290			2.900		
20 (6m)			28 (6m)			42 (8m)			60 8(m)			75 (8m)			100 (8m)		
1.075			1.350			1.650			1.950			2.500			2 x 1.950		
FAGOR / SIEMENS / FANUC						FAGOR / SIEMENS / FANUC						FAGOR / SIEMENS / FANUC					
DIN 8607 / ISO 13041						DIN 8607 / ISO 13041						DIN 8607 / ISO 13041					



**"V" TYPE GUIDING SYSTEM.**  
 Autocentering V type slide guiding system of the carriages, with Biplast film and central oil lubrication. The best system for turning and grinding for its accuracy, rigidity and maintenance.

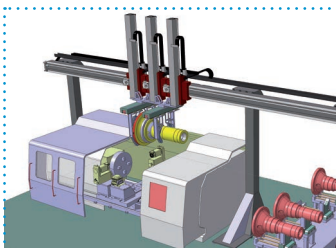
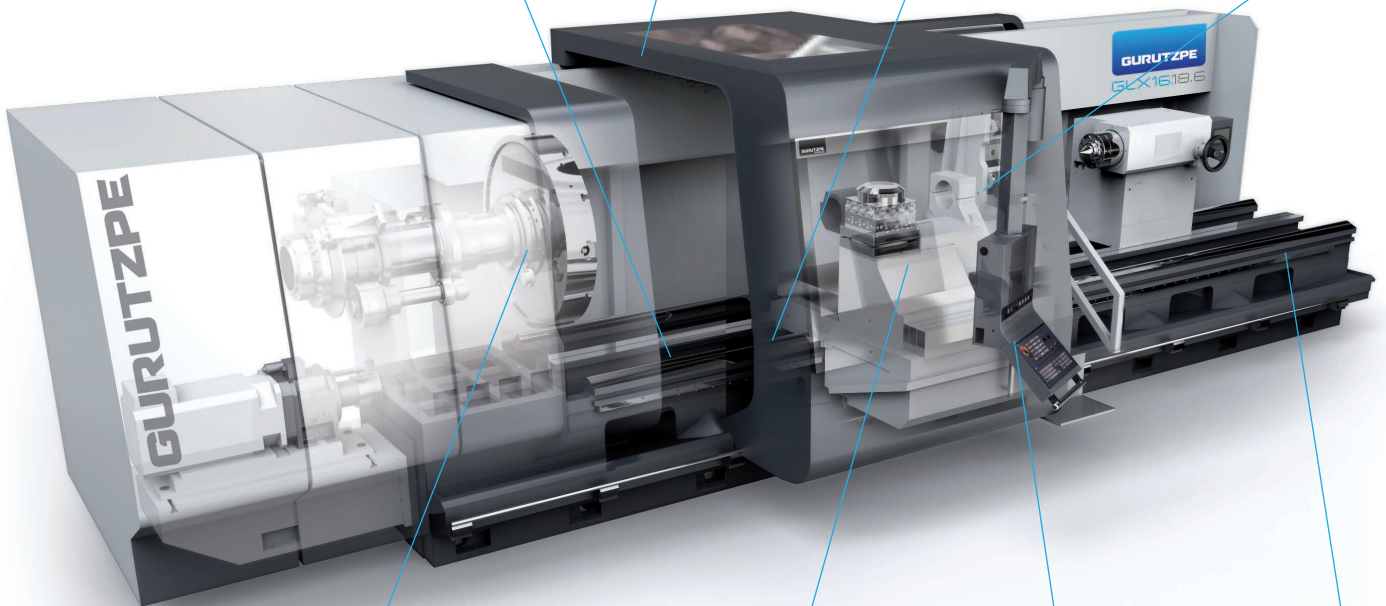
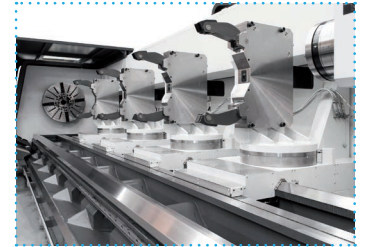


**ROBUST AND RELIABLE.**  
 Strong monoblock GG30 casting bed, headstock and tailstock. Designed with FEM (Finite Element Method), maximizing the strength and vibration absorption parameters.

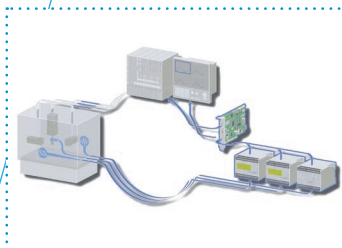
**FRONT AND BACK GUARDS, FULL ENCLOSED CARENAGE.**  
 Multiple options for protections, guarding and machine insulation, guaranteeing the most ergonomic, safe, clean and productive conditions.



**STEADIES.**  
 Wide range of steady rests, for different workpiece typology (different dimension, shape and weight) and working process: open, closed, C type, Autocentering hydraulic, white metal, hydrostatic, follow rest, etc.



**AUTOMATIC WORKPIECE LOADING AND UNLOADING.**  
 Systems for workpiece automatic loading and unloading. Integrated with other functions of the machine, it allows working in automatic or semiautomatic mode.

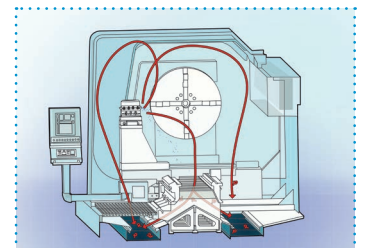


**TECHNOLOGY 4.0.**  
 Integrating control sensor for vibration, temperature, energy consumption, etc., we can monitor and manage in real time things such as the tool wear, the state of the bearings, the lubrication system, unbalances, etc.

**AUTOMATIC TOOL CHANGERS.**  
 Wide range of Automatic Tool Changers (ATC) such as chain type, drum type, robots, statics, etc. Automatic tool change of turning tools, milling tools and boring bars.



**GOOD CHIP REMOVAL.**  
 Wide range of chip removal solutions (front and back automatic chip conveyors, double ramp beds, etc.). We adjust it to your civil works needs and limitations.



# SECTORS AND MARKETS



Steel Industry



**Tenaris**

BabcockPower

voestalpine

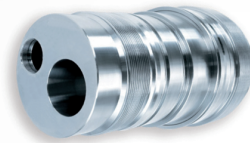
ArcelorMittal

ThyssenKrupp

ATI



Oil & Gas



CAMERON

Schlumberger

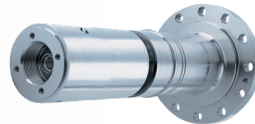
SCHOELLER-BLECKMANN OILFIELD TECHNOLOGY

VAM DRILLING

HALLIBURTON



Power Generation



Ingeteam

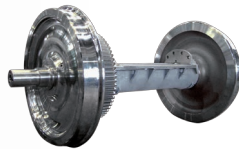
Rexnord

ENERCON  
ENERGY FOR THE WORLD

WEG



Railways



ALSTOM

renfe

SNCF

LUCCHINI



Turbines



SIEMENS

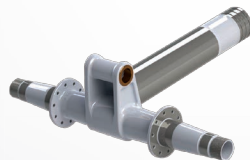
HELIX

TurboCare

TDPS



Aerospace



ST Engineering

SAFRAN  
AEROSPACE DEFENCE SECURITY



General Industry



MICHELIN  
Le monde tourne sur Michelin

EATON

ALFA ROMEO GROUP

MAG BOEHRINGER

DCNS

B&W



**gurutzpe.com**

**CENTRAL**

GURUTZPE TURNING SOLUTIONS S.L.  
Pol. Ind. Q8 ITZIAR-DEBA (SPAIN)  
T +34 943 19 90 80  
gurutzpe@gurutzpe.com



**Gurutzpe Germany**

Industriestrasse 4  
70565 Stuttgart (Vaihingen)

**Gurutzpe Italy**

Fraz. San Martino Cantone Perotti 1  
13865, Curino (BI)  
T +39 3489 667 620

**Gurutzpe France**

22 Allée des basques  
64500 Ciboure  
T +33 680 487 866

**Gurutzpe Rusia**

Gurutzpe Россия  
МариоФернандесМосква, Ул  
Мневники, д.3, строение1,  
Тел: 8 910 421 28 13

**Gurutzpe USA**

1270 Rankin, Suite E  
Troy, MI 48083 USA  
Phone: (815) 282 3310  
Cell: (815) 979 3758

**Gurutzpe India**

44, Nagdevi Cross Lane  
Mumbai - 400 003, INDIA.  
T +91 (022) 2342 3524

**Gurutzpe China**

北京昌平区北七家高科技工业园  
电话: 0086-10-81764768-109  
手机: 0086-13693033639  
传真: 0086-10-81764595

**Gurutzpe Brasil**

TOTAL Maquinas Operatrizes  
Rua Dartagnan, 120 - São Bernardo do Campo - SP  
CEP 09619-020  
T (55 11) 4177-3938